

Executive Sanitary Yard Hydrant Installation and Operating Instructions

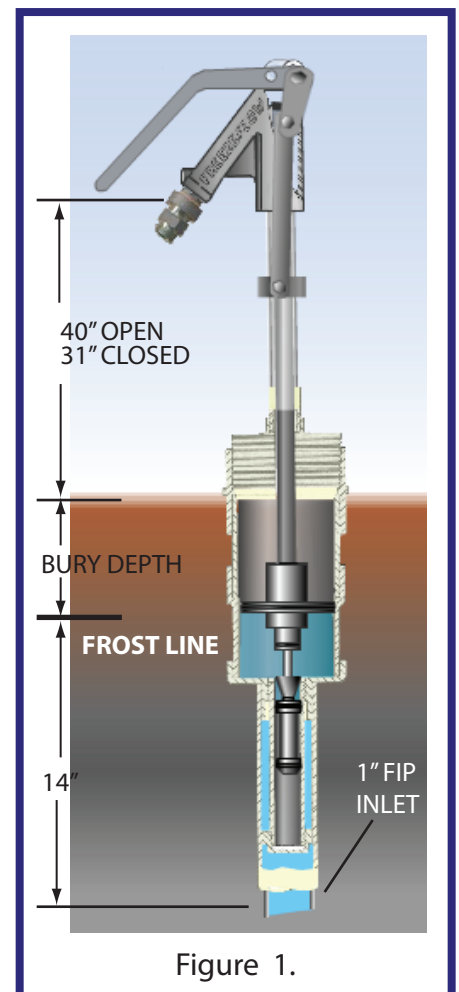
Installation

1. It is most important to Flush supply lines before installing hydrant. Failure to do so may permanently damage sealing surface causing leaks and possible freeze-ups.
2. Install hydrant so that the Adapter or Bushing is above grade for servicing. Figure 1.
3. Attach hydrant to supply lines using Teflon Tape or an approved thread sealant for PVC.
4. Do not over tighten PVC portion of hydrant to supply lines as it will damage hydrant.

Operation

1. No winterization is required to prevent hydrant from freezing.
2. Lift up on lever to turn on, push down on lever to turn off.
3. As hydrant is turned on some water will come out port holes in vacuum breaker, this is normal.
4. When the hydrant is shut off it will drain to the reservoir to prevent freezing, even if a hose with pistol grip nozzle is attached. However, the hose will not drain.
5. **DO NOT remove, discard, or bypass Backflow Preventer as Hydrant will not function properly.**

See Maintenance: "Field Testing the Backflow Preventer" for further information on the Backflow Preventer.



Executive Sanitary Yard Hydrant Maintenance Instructions

REMOVAL AND REPLACEMENT OF SEALS

In the unlikely event that your hydrant needs repair, it will be necessary to unscrew Bushing and lift entire mechanism out of the Cylinder. Follow the steps below being careful not to damage the plastic piston.

- 1.) Apply a wrench to the Bushing and a second wrench to the 4" pvc Cylinder to prevent the Cylinder from turning.
- 2.) Remove and replace the four seals shown.
- 3.) Lubricate all four seals with Vaseline.
- 4.) Carefully reinstall mechanism into Cylinder.

- Do not over tighten Bushing as it does not see any water pressure and future removal will be difficult.

No adjustment is necessary providing locking collar, at base of head, has not been moved.

Proper location of locking collar is when the top of collar is in line with shoulder (step) in 1" galvanized riser pipe.

FIELD TESTING THE BACKFLOW PREVENTER

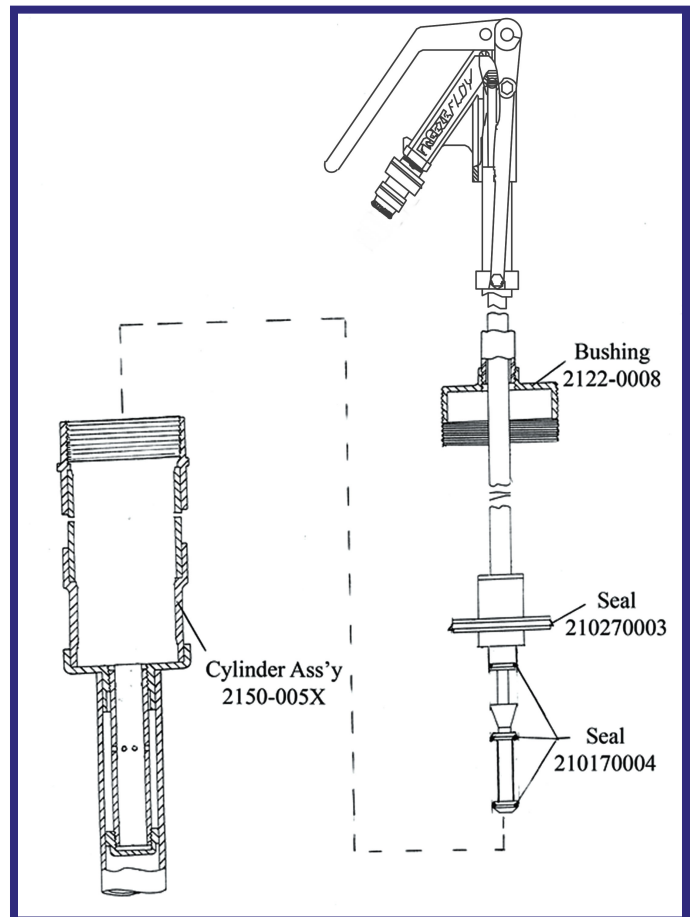
If the Backflow Preventer is not operating normally the Hydrant will not function properly.

To field test backflow preventer:

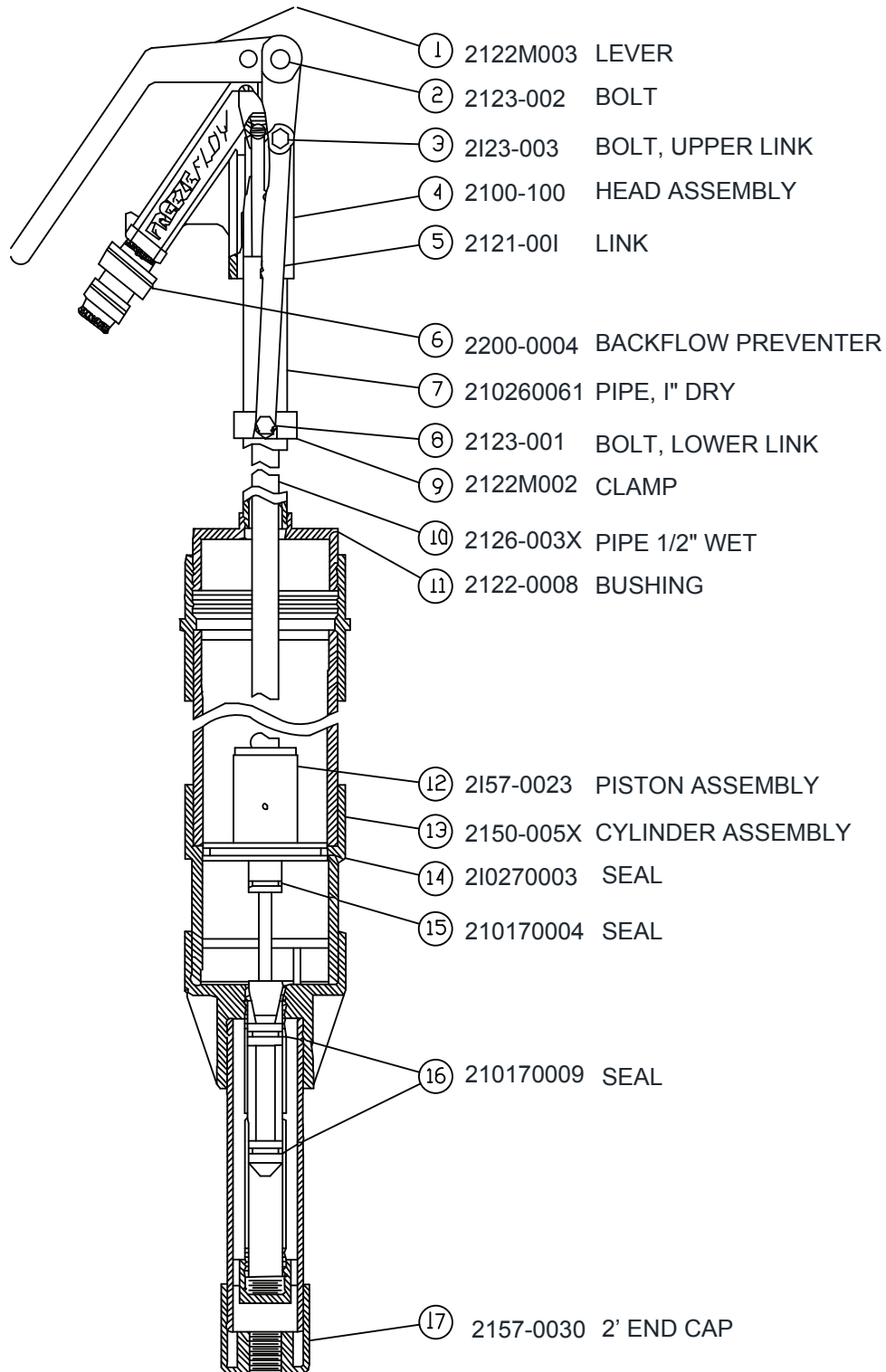
- Raise hose above hydrant head.
- Turn on hydrant until water flows from hose
- Hose should remain full of water.

If hose drains down then repair or replace backflow preventer.

NOTE: If the hydrant has not been used for a long period of time, it is advisable to flush the hydrant for 60 seconds when the water is used for drinking.



Executive Sanitary Yard Hydrant Parts



HOEPTNER PRODUCTS

7796 Oak Spring Circle, Gilroy, CA 95020 * Ph 408-847-7615 / Fax 408-847-0675
work@garlic.com * www.freeze-flow.com



Hoeptner Products

MANUFACTURER'S LIMITED ONE YEAR WARRANTY

Hoeptner Perfected Products warrants this product to be free from defects in material or workmanship for a period of one year from date of original shipment. Hoeptner Perfected Products will, at its option, repair or replace any part of this product that proves, upon our inspection, and within one year from date of shipment, to be defective in material or workmanship. Transportation costs or charges incidental to warranty service are to be borne by the purchaser-user. This warranty does not apply to goods or parts not manufactured by Hoeptner Perfected Products, instead Hoeptner Perfected Product's obligation for these parts is limited to the actual warranty extended to Hoeptner Perfected Products by the manufacturer. This shall constitute the exclusive remedy for breach of warranty, and Hoeptner Perfected Products shall not be responsible for any incidental or consequential damages, including without limitation, damages or other costs resulting from labor charges, delays, vandalism, negligence, fouling caused by foreign material, damage from adverse water conditions, chemicals, or any other circumstances over which Hoeptner Perfected Products has no control. This warranty shall be invalidated by any abuse, misuse, misapplication or improper installation of the product.

Hoeptner Perfected Products makes no other warranties express or implied of any kind with respect to the goods, parts and materials, including but not limited to, any implied warranty as to merchantability or as to the fitness of the merchandise for a particular use and shall not be liable for any loss or damage, directly or indirectly, arising from the use of such merchandise or for consequential or incidental damages

RETURN POLICY

All products returned must be in new, perfect condition in their original packaging. We will not accept returns after 30 days. All returns are subject to a 25% restocking fee. Shipping charges will not be refunded.

All returns must be authorized in advance and be issued a Return Authorization Number - please call or e-mail us before sending returns. Returns sent to us without prior authorization will be refused delivery.

IMPLIED WARRANTY

There is no warranty other than the Manufacture's Limited One Year Warranty.

HOEPTNER PRODUCTS

7796 Oak Spring Circle, Gilroy, CA 95020 * Ph 408-847-7615 / Fax 408-847-0675
work@garlic.com * www.freeze-flow.com